

ABOUT NARRABURRA

By John Propsting 2006 (Revised Jan 2010)

THE HISTORY

In the beginning, as the story goes, six students from the University of NSW went on a first time ski weekend trip to Perisher in July 1963. They staying at Eremo Lodge but enjoyed quite a few ales at the Man after a day's skiing and some fancy face planting. When they staggered back to Eremo, just across the road, they got to talk about how they could build their own ski lodge, rather than stay in someone else's lodge. You see they were all students in the School of Architecture and Building at UNSW and this was an idea that came to them that would test their developing scholastic skills. Now our lodge was conceived!

Five days later, in the middle of a structural engineering lecture, but they were actually in the back bar of the Belmont, the lodge was born. They were unstoppable. Committees were formed, arguments erupted, but they were under way. All they needed were 30 members at one hundred pounds each to form a Co-Operative and the Kosciusko State Park Trust (now known as the National Parks & Wildlife Service, NPWS) would give them a lease. A hundred "quid" ... no worries ... they were all in second year and could hardly pay their rent!

They advertised all over the Uni and eventually got 30 members, some were even girls, to the delight of the guys. Back they went to the Registrar of Co-Operatives, where a bureaucrat refused them. "No", he said, "You need 45". It had taken them a year to get 30, but not to be discouraged, they kept going and months later they went back to the man at the Registry, but again he said no. He had reconsidered and now they needed 60. The man was abused from one end of his office to the other, but 60 it had to be.

They eventually went back to him with their 60 paid up members and received their registration. When they asked him afterwards why he had not told them 60 in the first place, he sagely said, "You would never have done it". He added, "I knew you were all determined and I did not want to crush your spirits. You would have given up, but you didn't. It always had to be 60".

Eventually a 20 year, 16 bed, Lease was granted from 1st November 1965 and signed on the 12th November 1965 and Narraburra was up and running. The first year's Lease Rental was £16. The name was chosen from a list of Aboriginal names supplied by NPWS. Narraburra was listed as meaning "Rough Country" and in 1965 that is what the lease sight looked like; more exposed granite rocks and snow gums than anything flat to build on.

The Lodge was built by the original 60 members, boys and girls, in a series of weekend work parties starting in November 1965 and opening for its first ski season in June 1966. The roof was on but not much else.

Throughout it all the spirit grew, we scrounged for money in the most unlikely places, and we hired ferries and charged exorbitant rates to drink raw wine out of ten gallon milk urns and became legends in our own party time. Interest in membership multiplied, everyone wanted to come along for the ride. Narraburra was up and running. It was the party lodge, romances bloomed, marriages happened and others didn't.

Our original Chairman was Rudi Heins, an Interior Decorator, someone more senior than the original six, who they looked to for guidance. The arguments diminished as it got serious. Rudi talked the NAB into lending us \$30,000. They all had to sign personal guarantees, even though they had no ability to repay the loan. Rudi was followed the year after by Len Clark, an Engineer. The initial years were difficult financial times, but we pulled through. In 1968, our third year of operation, William (Bill) Jenkins, an Economist, took over the position at the top and served as Chairman till February 2006. Bill died on the 4th December 2007, after a long battle with ill health.

The original six, in alphabetic order, were:

John Barnardos, who died in 2004.

Robert (Bob) Dunnet, who is still a member.

Ross Ferguson, who later died in the lodge from a heart attack.

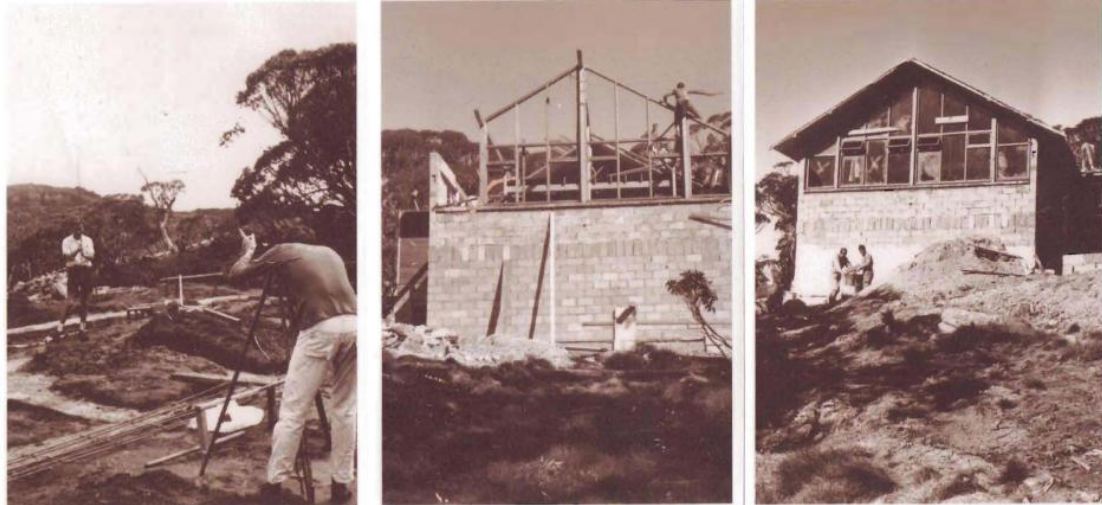
Harry Jemison, who has now sold his membership.

Doug Reid, who has now sold his membership.

John Sherwood, who is still an active member and Director.

Our heartfelt thanks go to these six musketeers and the man in the Registry Office, whose name we don't recall.

The narrative above comes from John Sherwood's memory of events.



Photos by Bob Dunnet: Laying Foundations to Near Completion 1965-1966

THE ARCHITECTURE

After the group of six rallied their fellow student at UNSW, expanding their numbers to include Architects, Engineers and Builders of the future, they got down to working out how they could build Narraburra with their own bare hands. Their appointed Architect, Nick Michalandos, came up with the idea of prefabricating a wooden "A" frame design on top of a block work lower ground floor structure. A New Zealand company called Lockwood was used to prefabricate the upstairs structure from a special design of Radiata Pine beams and planks. The system consisted of vertical grooved posts with double tongue and groove horizontal planks stacked one on top of each other, down the post grooves, to form a wall from floor to roof level. These wall planks were not your ordinary weatherboards, they were 2 ¾ inches thick on the outside walls and 2 inches on the inside walls with no nails or screws to fix them in place. This allowed the timbers to expand and contract in the extremes of snow country weather, without pulling on nails. The outside of the lodge originally had a milled horizontal pattern and was stained. Over the years cracks and knot holes opened up which had to be filled, leaving painting as the only remaining option. The whole lodge shell went together like a Lego Set and remains to this day one of the best designs for snow country dwellings.

Work party after work party was spent constructing the lodge during the following two summers. It's worth while looking at the photographs and newspaper clippings on display at Narraburra in the memorabilia cabinets hanging in the ski vestibule to get a better idea of the weekend after weekend endless toil involved in making Narraburra.

Over the 40 years of the lodge's history we have had five architects, all drawn from our membership. Following Nick Michalandos came Geoff Grenfell, Mike Cashell, Tim Earnshaw and now Anika Spears (née Kumar).

THE DEVELOPMENT

The original floor plan consisted of the existing kitchen and dining room (which doubled as the lounge room) with the bedroom wing consisting of two four bunk rooms and four two bunk rooms with a male and female common bathroom and adjacent toilets. The original balcony was an all-wooden structure, which latter became enclosed in varying stages. Down stairs consisted of the ski entry, the drying room, laundry, plant room and pretty much a void under the bed room wing upstairs. The lodge has been developed continually over the years. The "Void" was first to be upgraded, with a poolroom installed where room 9 now stands and most of the other area was used as a storeroom. Many of us remember the old poolroom with a bar in the corner for drinks (and leaning on) and a masonry post at the corner of the pool table.

There was a special “short” cue supplied for playing out from behind the post, which all made it part of the game.

In 1969 we increased our membership numbers from 95 to 100 to meet our lease requirements. I remember this quite clearly because that is when I became a member. At that time, shares were selling for their face value of \$240. We had a pre-season “Woolshed Dance” in a country barn in Camden, with bales of hay to sit on and a dirt floor to dance on. For supper we had buckets and buckets of KFC; I think it was the first year the franchise arrived in Australia! I thought it was such a hoot that I joined Narraburra without ever seeing the lodge.

At some stage our lease was renewed increasing our bed numbers from 16 to 19 and so the downstairs bedrooms were developed.

The first major extension was the addition of the lounge room area and the relocation of the poolroom to its current location. A lot of opposition from members nearly prevented this extension from proceeding. We had to make a call on members, which was not popular, and negotiate a bank overdraft for finance. The change of the open fireplace position and the two steps down into the lounge room was also not favoured by all.

In 1998 we decided that bunk accommodation was getting a bit tiresome for us oldies and the bedroom extensions were undertaken. We raised most of the finance from selling more shares, but this time at a market value of \$14,000, increasing our numbers from 100 to 110. This was the time when we added en suites to each bedroom, something we are very comfortable with now. This was also the time we introduced the status of Affiliate, a form of membership for member’s children once they became 18 or independent after tertiary education.

In 2002 we split room 4, which originally had 4 beds, into two rooms of 2 beds, each with an en suite. Hence we now have room 4A and room 4B.

MEMBERSHIP

- **A Member** is the person with a share holding in Narraburra. The member may be male or female, but membership may not be held in joint names. Members have voting rights at General Meetings of the Co-operative. All Members have equal rights. A Member pays an annual membership subscription and if they fall in arrears by more than 2 years they will forfeit their membership, after due warning. Members can transfer their shares by sale to anyone approved by the Board or by gift or by will to a member of their immediate family. Where there is a consideration received for the transfer of the member’s shares, a Transfer Fee of 10% of the consideration is payable to Narraburra. When a member transfers their shares to someone outside their immediate family, their Associates and Affiliates lose their form of membership. A member may transfer their membership to a family Affiliate on a swap basis. The Member becomes an Affiliate and the Affiliate becomes a Member, however the ex member’s spouse and children then become guests. If a Member becomes divorced and remarries, then the member’s first spouse loses their Associate status, but the Member’s children of both marriages retain or gain Associate and Affiliate status.
- **Associates** are the spouse or partner of a Member and the dependent children of the Member. An Associate has no voting rights but all Associates pay member’s rates for accommodation. A Member’s child remains an Associate till they become 18 years old, or become independent after tertiary education.
- **An Affiliate** form of membership is available to member’s independent children over 18, who pay a non-refundable Affiliate’s fee of \$1,100 (including GST). Affiliates have no voting rights and their membership is not transferable. An Affiliate pays an annual membership subscription and if they fall in arrears by more than 2 years they will forfeit their membership, after due warning. An Affiliate’s spouse and children are not Affiliates. An Affiliate pays member’s rates for accommodation. An Affiliate has the right to take their spouse, or a friend, at member’s rates. Affiliate’s children under the age of 5 are accommodated free of charge provided they share a room with their parents. Affiliate’s children over the age of 5 pay guest’s rates.

THE LEASE

The Kosciusko State Park Trust granted the original lease for 20 years. The lease was signed on the 12th November 1965, but in the schedule of rental the rental started on the 1st November each year.

- For the first 3 years the rental was fixed at £1 per bed, for 16 beds.
- For the next 7 years the rental was £3 per bed.
- For the remaining 10 years the rental was £5 per bed.

(Note: Decimal currency was introduced shortly after this lease was signed.)

The lease was signed by, Rudi Heins (Chairman), Ross Ferguson (Secretary) and Nick Michalandos (Director).

On the 1st November 1985 Narraburra exercised its option to extend its lease for a further 10 years.

On the 5th February 1996 the Minister for the Environment granted a new lease. This lease was for 19 beds for a further 30 years and 6 months commencing on the 1st July 1995 and ending on the 31st December 2025. This expiry date was designed to coincide with the commercial leases already in existence including Perisher Blue. So, at this time, all leases in Perisher Valley expire on the 31st December 2025. William Jenkins (Chairman), Michael Cashell (Secretary) and John Sherwood (Director) signed this lease.

In February 2006 all lodges in the Perisher Range Resort (Perisher, Smiggin Holes and Guthega) were invited to participate in a Bed and Lease Extension Expression of Interest (Eol). The proposal involved a bidding process for an available 520 new beds and a lease extension premium for an extension of 2 years with three 10 year options to renew. This offer would effectively extend leases to the 1st July 2057. Unfortunately no one had any idea of what was going to be an acceptable bid price per bed, except that the highest bids were going to be accepted first and bids below an undisclosed value were going to be ignored. In addition to this there were a number of unacceptable lease conditions. "Slopes", a voluntary organisation acting on behalf of all lodges, became involved and recommended all lodges to boycott the Eol, which was to close on 30th June 2006. Two or three lodges did make offers but the vast majority of lodges made no reply and no bid. As a consequence the DEC and NPWS were forced into negotiations with Slopes and the Chamber of Commerce and eventually a far better offer was made to lodges, with known bed prices depending on the proximity to the Perisher Centre and revised lease conditions. Narraburra accepted the Lease Extension proposal, but no new beds. A new Lease for 19 beds was issued commencing on 1st June 2008 for 20 years plus three 10 year option to renew.

CLUB OPERATION

The Club is a Co-Operative governed by the Co-Operative Act and we report to the Department of Fair Trading.

The Club is run by a Board of Directors elected annually by Members at an Annual General Meeting. A Director must be a Member. The Board consists of ten Directors. ie: Chairman, Secretary, Treasurer and Booking Manager, who make up the Executive Committee. Then there are six remaining Directors who are given specific duties by the Chairman. ie: Building Committee, Membership, Operations, Food Store, Asset Register, Slopes Representative, Ski Trails Editor, Ski Promotion and Lodge Upkeep. The Board meets approximately monthly, depending on outstanding business, but not as regularly during the ski season.

The Club publishes a news sheet called "Ski Trails", hopefully 3 or 4 times a year. This gives the Board the opportunity to keep Members, Affiliates and their families informed. The Club logo, in the artistic form of NSC and as seen on our letterhead, represents ski trails in the snow (just in case you hadn't already guessed).

LODGE OPERATION

Narraburra is a Club Lodge, situated right on the ski fields at Perisher Valley about 400 metres from the Ski-tube Terminal in a south-easterly direction. It is sign posted at the road juncture behind the Man from Snowy River Hotel. From the Lodge you will enjoy a panoramic view of the ski fields and the surrounding area.

Please note that smoking is prohibited throughout the Lodge.

Narraburra is a non-catered Lodge, where the Lodge Captain allots a cleaning duty to every guest. Guests are responsible for the cleanliness of their bedroom, for their own cooking and leaving the kitchen tidy. A Lodge Captain is appointed each week by the Booking Manager and is usually a responsible member with some year's experience in running the lodge and knowing where everything is.

Narraburra is a "ski out" Lodge, but it has its own over-snow vehicle, operated by the Lodge Captain, to help you with your return up the hill to the lodge.

The lodge is centrally heated and well appointed throughout. It has a large lounge room with an open fire, separate dining room and a large deck with outdoor furniture and barbecue facility. There is a full sound system, which you may use to play your CD collection, including a plug in facility for an Ipod. A Games Room is available containing a pool table. Please note that an adult should supervise children if playing pool.

There is a fully provided laundry as well as an efficient drying room. There is a work area for repairing and waxing skis, various locker rooms along with a ski and board storage area. Lockers are hired from the lodge for a minimal annual fee which allow members to store ski gear the full year through.

All the bedrooms have en suite facilities and various bed allocations (twin beds, single beds, double beds). The rooms have hanging spaces for clothes, clothes baskets, clothes racks, wall mirrors, bedside tables, bed lamps, power points and emergency electric wall strip heaters. Each bed is provided with a mattress with a protective cover, pillows, blankets, a doona and a freshly laundered doona cover. You must bring your own single sheets, towels, pillowcases, or sleeping bag. If you are allocated a double bed there are double sheets available in the lodge, if you didn't bring any, but you will have to wash them before leaving. The Lodge has a number of hair-driers for your use, as well as a fully stocked First-Aid box.

For your cooking you will be using a very modern kitchen with a full range of facilities. These include a gas stove with electric oven, a separate electric wall oven, two microwave ovens, two dishwashers, and electric appliances including a cappuccino machine, utensils, woks, cutlery, crockery, freezer and refrigerators. The kitchen is designed with three distinct work-stations, each with its own sink with running hot and cold water and a cutting and preparation area. The following free cooking ingredients are also available.

Coffees (ground, instant, decaffeinated), tea, drinking chocolate, Milo, salt, pepper, various herbs and spices, rice, spaghetti, sauces (tomato, soy, chilli, HP), assorted mustards, white and malt vinegar, safflower oil, olive oil, brown and white sugar, assorted jams, vegemite, honey, peanut butter, plain and SR flour, corn flour, mayonnaise, curry powder, gravox, mint sauce, lemon juice, custard powder, parmesan cheese, glad-wrap, alfoil, wettex, rubber gloves, paper towels, soap powder detergent and plastic garbage bags.

Winter accommodation is from 12 noon on a Saturday till 12 noon the following Saturday. Guests may arrive earlier on a Saturday morning, but they must leave all their luggage and food downstairs in the games room. There is a separate bathroom and toilet downstairs for your use. However, it is not uncommon to be invited upstairs for a coffee and a chat, but you are not expected to just hang around as everyone will be busy with their cleaning chores and packing out of the lodge and kitchen.

Weekend winter accommodation, if it is available, is from 9 pm Friday till 9 pm Sunday.

It is the normal practice to have a Lodge Captain's party on Sunday night. The Club will supply the Lodge Captain \$100 to buy party provisions of his choosing from the Valley Super Market. Guests are also encouraged to provide "nibbles", to supplement the Lodge Captain's supplies. The Lodge Captain is required to inform you of the Fire Safety procedures in the Lodge and will have a friendly chat with you on the general running of the Lodge. He or she (he) will post a list of cleaning duties on the notice board. He will also tell you when he, or his deputy, will operate the Argo over-snow vehicle. Normally he will offer two return trips to the Lodge in the afternoon. These trips are usually for transport of skis, boots and shopping only.

Consider yourself lucky if you score a lift. It's a good idea to have the Argo take down a pair of Après Boots in the morning so they are available for you to change into when you leave your skis and boots in the trailer for transport back to the Lodge. To drive the Argo you must have a licence issued by the National Parks and Wildlife Service. To get a licence you must present a letter of approval from the Club on its Letterhead along with your driver's licence and their required fee to their office in the Valley, just up from the Ski-tube building.

On leaving the lodge you must perform your cleaning duty and clean out your bedroom. This entails vacuuming the carpeted area, cleaning the bathroom, shower and toilet, close all windows, draw the curtains, fold all blankets and doonas away and empty all rubbish bins. Please note that the Club will not be responsible for any private property left in the Lodge.

CENTRAL HEATING

The Lodge is centrally heated by two LPG burners that distribute warm air via a ducted system to all areas of the Lodge, except the ski room and vestibule, downstairs hallways, laundry, garage and locker rooms. One unit is located in the plant room, behind the drying room, and services the front half of the Lodge. Ie: kitchen, dining room, lounge room and the games room downstairs. The second unit is located in the ski storage area, behind the garage and services all the bedrooms, both upstairs and downstairs.

The control panel for the front of the Lodge is on the wall next to the stereo system. The control panel for the bedrooms is on the wall in the downstairs hall next to room 8.

The central heating is turned ON or Off at these control units. The round button with two vertical lines toggles the networks ON and OFF. Make sure the heaters are turned on at all times while the Lodge is occupied.

The round button directly below marked either "Fn" (upstairs) or as a light bulb (downstairs) turns on the screen light for 15 seconds.

Both units are programmed to regulate the temperature in the Lodge within 5 different time slots to minimise the use of LPG at times heating is not required. The programmed time slots are as follows:

BEDROOMS

Wake	6.00 am	19° C max
Leave	9.00 am	Off
Return	4.00 pm	19° C max
Pre-sleep	10.00 pm	18° C max
Sleep	12.00 am	14° C max

LIVING AREAS

Wake	6.00 am	19° C max
Leave	9.00 am	Off
Return	4.00 pm	19° C max
Pre-sleep	10.00 pm	18° C max
Sleep	12.00 am	Off

If members or guests remain in the lodge between 9am and 4pm, when the heating system is turned off, a manual override to the program is available. Often the open fire can not maintain a comfortable temperature throughout the living area and rather than huddle around the fireplace to keep warm you can use the manual override.

The living area of the Lodge is the most likely area for guest to congregate. The control panel next to the stereo system controls this area. Open up the hinged panel hiding the additional control buttons on the right hand side of the control panel. This cover opens from the top right hand side and hinges down. Locate the button marked "AUTO" (in the middle column and third down). This button toggles the Auto program ON and OFF. When the Auto program is turned OFF the Network reverts to MANUAL operation. At the bottom of the screen either AUTO or MANUAL will be shown. When MANUAL is showing the Rotary Dial can be turned clockwise to raise, or anticlockwise to lower, the set temperature. The set temperature shows at the middle top of the screen. A setting of 19° is recommended. Setting it higher does not make it heat up faster. At 4.00 pm the Network MUST be set back to AUTO.

All of the above instructions are available at the Lodge and are best understood when looking at the controller.

It is unlikely you will need to set the bedroom controller to MANUAL, but if you do, it operates in exactly the same way.

Please do not attempt to reprogram either of these networks. If the Booking Manager detects any interference to the programming he can lock the networks with a pin number and this will prevent any changes to the system including setting to MANUAL. If you think the program has been altered, ask the Booking Manager to look at it. He is authorised and knows how to reprogram the systems.

We know that some rooms get hotter or cooler than others do. If you wish to restrict the hot air coming into your room, you can adjust the vent opening or simply put a bag over it (upstairs only).

A max/min digital thermometer has been placed in each room that will tell you how hot or cold it gets. Simply press the max or min button to read out the history. When max or min is not showing on the screen, the current temperature is displayed. These units are accurate to $\pm 1^{\circ}$ C. The max and min records can be reset with the reset button provided max is showing to reset max and min is showing to reset min. Relative humidity is also shown on these thermometers and also has max/min capabilities. There is a full explanation of these units on the notice board.

OPENING AND CLOSING THE LODGE

During summer the lodge is available to members and their guests and has proved to be a very popular retreat. The most popular times are immediately after Christmas, running through to February and the Anzac and Easter long weekends. If you would like to stay at the Lodge during the Autumn or Summer periods it is important that you know how to get into the Lodge and turn on all the facilities. Similarly you need to know to close down the Lodge.

The winter front door is equipped with a combination lock, which allows you to gain access without a key. This operates all year, but the combination is changed each year in October.

The electricity is turned on at the Fuse Box along side the Summer door. The general power and light switches at the top right of the box are taped ON and should not be turned OFF when leaving the lodge. The only switch that needs to be turned on is the three green hot water switches. Next check that the LPG bottles near the Winter door are turned on at both cocks on top of the bottles. You can also check the fill of the bottles by the gauges that read percentage full. A tank is FULL when the gauge reads 80%, as the last 20% is required for gas space over the liquid LPG.

Proceed inside the Lodge and turn on the refrigerators and freezers that you will need, including the bar fridge. Next you need to turn on the central heating. Locate the two control panels, one upstairs on the wall next to the stereo system and the other on the wall in the downstairs hall next to room 8. To turn on the Networks for both areas press the round button (with the two vertical lines) at the top right hand side of the panels. This will light the screen and show progressively the thermometer representation, a fan rotating and finally a flickering flame. This depicts the warm up procedure before the system is fully running. If you arrive between 9.00 am and 4.00 pm, the auto programs will not allow the systems to start up. In this case you may wish to turn on the MANUAL control. See under **CENTRAL HEATING**.

When leaving the Lodge you must:

- Turn off all the refrigerators and freezers at their power points.
- Leave all the refrigerator and freezer doors propped open.
- Turn off the Central Heating.
- Close all windows and draw the blinds and curtains.
- Turn off the hot water in the Fuse Box. The general light and power switches are to remain ON. These circuits power the Fire Safety System including the Emergency Exit lights.
- Lock the Lodge.
- Have a safe trip home.

BOOKING RULES

- Winter bookings open mid February. The Booking Manager advises the exact date each year.
- All bookings received before the opening date are deemed to have arrived on the opening date.
- If too many bookings are received for any week by the opening date, usually the July school holiday weeks, a ballot will be held. Any member losing their booking by ballot will automatically be given a booking the following year before balloting begins.
- The winter season begins on the June long weekend and finishes after the October long weekend or when ever the ski lifts are closed for the season.
- The winter season is divided into various periods with different accommodation rates for each period. The Booking Manager advises the exact dates for these periods each year.
Typical periods:
 - June long weekend Discount rates apply
 - Early June Special rates apply
 - Late June Discount rates apply
 - July and August Peak rates apply
 - Early September Shoulder rates apply
 - Late September Special rates apply
 - October long weekend Special rates apply

Family discounted rates apply in some weeks, as specified by the Booking Manager, and are for a family of 5 maximum. For families of more than 5, the extra bookings are at normal rates and are additional to the family rate.

- A Member is the person with a share holding in Narraburra.
- Associates are the spouse or partner of a Member and the dependent children of the Member. All Associates pay member's rates for accommodation. A Member's child remains an Associate till they become 18 years old, or become independent after undertaking education.
- An Affiliate form of membership is available to member's independent children over 18, who pay a non-refundable Affiliate's fee of \$1,100 (including GST). An Affiliate pays member's rates for accommodation.
- Guest rates pay double member's rates for each winter period.
- All children under the age of 5 irrespective of whether their parents are Members, Affiliates or Guests are accommodated free, provided they stay in the same room as their parent/s or carer/s.
- Affiliate's children over 5 pay Guest's rates.
- Booking priorities exist, ranking down from Members and his/her Associates to Affiliates and then Guests.
- Members may bring with their first priority their spouse and children for the full season.
- Members may alternatively bring with their first priority with or without their spouse, and without their children up to two adult guests for all periods except the NSW July school holidays.
- A spouse may stand in for a member in regards to the above priorities.
- An unmarried Member may bring with their first priority one guest for the full season.
- Affiliates may bring with their second priority their spouse or one guest for the full season.
- Members and Associates, along with their accompanying Guests, have first priority till 1st April for bookings up until the last Saturday in July and priority till 1st May for bookings thereafter.
- Affiliates, along with their allowed guests, have second priority. They have priority over guests, but not members, till 1st April and 1st May as for members above.
- Guests, other than those with priority from Members, Associates or Affiliates, have third priority after Members, Associates and Affiliates.
- After the priority dates of 1st April and 1st May, as mentioned above, it is "First in first served".
- Bookings for the winter season for weekends or any period less than 7 days including a Friday and/or Saturday night will attract a surcharge, as advertised, for those Friday and

Saturday nights on top of the nightly rate applicable. Member's weekend bookings have a priority immediately after member's weekly bookings. Weekend bookings for guests, unaccompanied by a member, cannot be confirmed until 10 days prior to the booking date.

- Bookings for the winter season, for irregular periods, other than weekends as above, will incur a surcharge, as advertised, and the booking cannot be confirmed until 10 days prior to the booking date.
- All bookings for weekends and "carry-overs" must be confirmed with the Booking Manager.
- All cancellations of bookings that have been confirmed will incur a handling charge of 20%. Cancellations of bookings in excess of 8 weeks prior to the confirmed date will receive an 80% refund; less than 8 weeks but more than 6 weeks will receive a 30% refund; 6 weeks or less will receive no refund.
- Members and Guests are very welcome to stay at the Lodge during summer and autumn, but they may be required to share the lodge with work parties, who have priority except during the April NSW school holidays.